



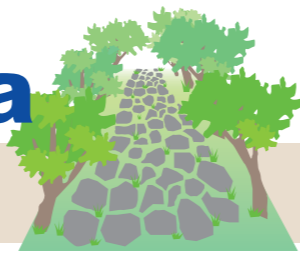
United Nations
Educational, Scientific and
Cultural Organization



San'in Kaigan
UNESCO
Global Geopark

Formation of Mt.Shichiyama and History of People

Mt.Shichiyama East Course



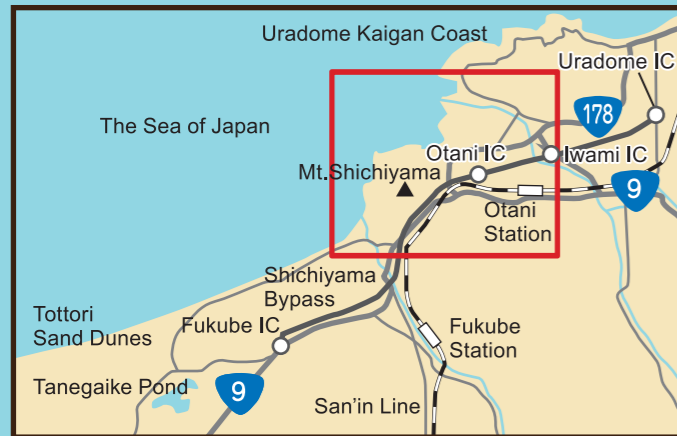
The west side of Otani Beach in Iwami Town is a pebble beach made of gravel carried from Mt.Shichiyama. As various kinds of gravel can be seen there, it is a suitable place for observation of rocks. At the east root of Mt.Shichiyama, Kobatake Ancient tomb Group was discovered on the occasion of construction of Shichiyama Bypass. It is shown that the chamber of the ancient tomb is also made of rocks of Mt.Shichiyama observed in Otani Beach. In the course, we can see that people were active around Mt.Shichiyama.

Let's walk along the stone-paved road built in the Edo period!

When it rained, Shichiyama Pass was hard to go through even on horseback because of slippery muddy ground. In 1811, when Tajuro, a Rokubu of Bizen Province, visited this district, he saw this chokepoint and found it to bring people suffering. And he determined to build a stone-paved road and got many people's collaboration, and it was completed in about a year. A part of the stone-paved road still exists today.



The stone-paved road



Basic Course

	Start	Estimated walking time
①	Pleasure boat landing stage of Uradome Kaigan Coast Hopping Boat	25min ↓ About 1.4km
②	Otani Beach	22min ↓ About 1km
③	The stone-paved road	17min ↓ About 850m
④	Kobatake No.3 Ancient tomb	1min ↓ About 50m
⑤	Ana Kannon	
⑥	Kobatake No.1 Ancient tomb	35min ↓ About 1.7km
①	Pleasure boat landing stage of Uradome Kaigan Coast Hopping Boat	
Total traveling time :		1h40min
Total distance :		About 5 km



The scene from a viewing rest station

Ebisuhama Observation deck

Geopark Road

There is a steep boardwalk stair. Pass through with care.

Takigaiso Rocky Shore

Lookout Rest Area

Shichiyama West Trail Connecting Route

There is a continued long stretch of uphill here

Iwaya Jizo (Buddha)

Isaribi Square

Mt.Shichiyama

Elevation: 314m

Shichiyama Bypass

San'in Line

Geopark Road

The Extra Quiz

Look for pitchstone in Otani Beach.

③ The stone-paved road

Quiz1

This area is considered to be the birthplace of Yoritomo Minamoto's favorite horse. What is the horse's name? (The answer is at the back.)

Quiz2

How many Jizo are in Ana Kannon? (The answer is at the back.)



To preserve these beautiful natural assets, please leave stones and plants as they are. Keep out of dangerous places and do not go off-limits. What you can bring home with you are happy memories, photos and local souvenirs!!

San'in Kaigan Geopark Walk model course (San'in Kaigan National Park)
First edition: 2013.3.28 Last updated: 2019.3.31

Around Otani's many places of interest

① Pleasure boat landing stage of Uradome Kaigan Coast Hopping Boat



On the pleasure boats on the sea, you can enjoy varied scene: a sea cliff and a sea cave which are cut by angry waves of the Sea of Japan and the wind and snow in midwinter, islands covered with black pines, a white quartzose sand beach and so on. They include a large vessel and a small ship, and the small ship can go into a cave. For details, please contact San'in Matsushima tour Co. Ltd. 0857-73-1212 Website: <http://www.yourun1000.com>

② Otani Beach



This is a coast which adjoins Ajiro fishing port. It is crowded as a beach in summer. Although most of the coast is a sand beach, Mt. Shichiyama's side is a pebble beach having much gravel. In the pebble beach, you can see various kinds of gravel, and they are rocks carried from Mt. Shichiyama (* refer to Geo Column 1).

③ The stone-paved road



When it rained, Shichiyama Pass of the old Nakasen-do Road was hard to go through even on horseback because of slippery muddy ground. In 1811, when Tajuro, a Rokubu (a Buddhist pilgrim priest) of Bizen Province, visited this district, he saw this chokepoint and determined to build a stone-paved road. And the stone-paved road was completed in about a year getting the collaboration of many influential men of Tottori and Kurayoshi. 152 m of the stone-paved road still exists today.

④ Kobatake No.3 Ancient tomb



This is an Ancient tomb constructed in the late Ancient tomb Period (about 1,400 years ago), which was excavated on the occasion of reconstruction of National Route 9 (Shichiyama Bypass). It has the total length of 12 m, and the House-Shaped stone coffin was put in the cave type chamber. According to the remains of a ditch around the Ancient tombs and shapes of other Ancient tombs, it is thought to have been a square tumulus with a side length of 27 m. It was reconstructed in the present place for preservation. Moreover, Ancient tombs No.5 was reconstructed in Fuse Sports Park.

⑤ Ana Kannon



These are the statues of Kannon enshrined in Kobatake No.1 Ancient tomb before. These statues were donated in commemoration of achievement of the land reclamation project of Otani Plain at the suggestion of Tadayu Wada, the operational manager, during the Anei period (1772-1781). They were enshrined in the present position in 1990 because of the danger of collapse of the chamber.

⑥ Kobatake No.1 Ancient tomb



This Ancient tomb is one of Kobatake Ancient tombs Group, and was also called "Ana Kannon Ancient tomb" because Kannon statues were enshrined in it. The Ancient tombs were constructed in the late Ancient tomb Period, and is big as its chamber has the total length of 11 m 20 cm and the height of its burial chamber is 3 m 50 cm at the highest point.

Recommend : Subaqueous Autobrecciated Lava in Otani Beach



The big rock in Otani Beach has traces of crack on the surface. The rock is made of cooled and coagulated lava, which was done rapidly because of spewing in water, and that made the rock cracked hard. Such a rock is called Subaqueous autobrecciated lava, and is the trace of lava coagulated in water. The same kind of rock is also seen at Iwado beach.

Recommend : Takigaiso Rocky Shore



At Takigaiso Rocky Shore, you can see a very tall eroded cliff. There are beautiful column shaped cracks on the cliff. The rocks have been formed by consolidated magma after cooling. It is a pathway for magma where it pierced through the surrounding rocks. It is 150 meter wide. When it rains, the water runs through the rocks like a water fall, creating a beautiful scenery.

Recommend: Chugoku Nature Trail



On the sea cliff of the north side of Mt. Shichiyama, Chugoku Nature Trail is maintained. Its Otani Beach's side has so great view that you can overlook Otani Beach and Ajiro fishing port. On the promenade, you can see traces of having created fields on flat surface which dot a steep slope.

Recommend: Ajiro Tunnel



Before this tunnel was built, there were a steep cliff and a lone narrow alley called "Sakagoehaccho," as if it was crawling on the cliff, between Ajiro and Kutsui. In 1907, the village mayor of Ajiro at the time planned to build a tunnel through the cliff, and the long-sought tunnel was completed in 1912. Those days, the inside of the tunnel was the bare granite wall, and was dangerous because it peeled off and icicles formed in winter.

Geo-Column ①

Gravel in Otani Beach

In Otani Beach, you can see granite which makes Uradome Kaigan Coast and many kinds of rocks which make Mt. Shichiyama as gravel. How many kinds can you find? Let's try!

<<Granite>>

This is the rock which makes Uradome Kaigan Coast, and is made of slowly cooled magma deep underground.



<<Rhyolite>>

This is a rock made of rapidly cooled magma. Striped pattern often appears in it.



<<Andesite>>

This is a rock made of rapidly cooled magma and is more blackish than rhyolite.



<<Pitchstone>>

Although this resembles obsidian, it doesn't have vitreous luster but resin-like luster.



<<Tuff>>

This is a rock made of solidified volcanic ashes.



<<Tuff breccia>>

This is tuff containing much breccia. It is made of solidified volcanic ashes and lapillus.



<<Sandstone>>

This is a rock made of gathered sand grain (1 / 16-2 mm).



<<Mudstone>>

This is a rock made of gathered particle of mud (1/16 mm or less).



Geo-Column ②

Otani Stream

There was a pond behind the sand hill of Otani before. Since 1695 in the Edo period, irrigation and land reclamation projects had been carried out actively in the area. Tokuchu Wada, who was employed by Tottori Domain, started to command the land reclamation of Otani Pond, and Tadayu of the third generation completed the project. Also "Inabashi" written in the Edo period (1795) says, "It is 1,700 m away from Hosokawa, beyond Mt. Shichiyama, in the north sandy plain. It is Tajima Highway. (snip) There is a stream nearby. It is Otani Stream, and was a big pond, but it became new field as time passed, so there is nothing left of the pond now."



Otani Stream as of now in which rice paddies stretch

Quiz-Answer ① Ikezuki ② 33 statues