

The colours interwoven by hills and volcanoes

# 丘と火山 が おりなす彩り

More than just photogenic.



The 4th Photo Contest 1st period  
The most outstanding work / Department award work



Check the website for details and latest information on Tokachidake Geopark!!  
<https://tokachidake-geopark.jp>

Tokachidake Geopark Promotion Committee 3F Biei Town Hall 4-6-1 Honmachi Biei-cho Kamikawa-gun Hokkaido  
Tel : 0166-76-4004 Fax : 0166-76-4005 Mail : [info@tokachidake-geopark.jp](mailto:info@tokachidake-geopark.jp)



**TOKACHIDAKE GEOPARK**  
BIEI-KAMIFURANO AREA  
INFORMATION PAMPHLET





*Welcome  
to a brand-new geopark  
designated as such in 2022  
Welcome to Tokachidake Geopark*

*About the Geopark  
A place to discover  
spectacular sights, eat delicious food,  
deepen your love for the earth,  
and make lasting memories.*



## Theme



# 丘と火山が おりなす彩り

*The colours interwoven by hills and volcanoes*

Around 2~1.2 million years ago, a massive eruption led to the pyroclastic flow deposits which became the footing for the hills we see today. Following eruptions in the Tokachidake Mountain Range formed them into their current shape. Thus, this beautiful scenery which shines in every season was born.

## Story



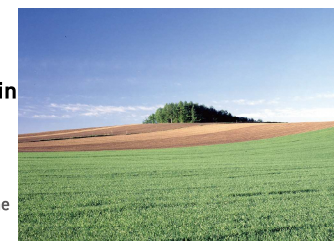
### The Roof of Hokkaido: A Tale of Mt. Tokachidake Living Together with Repeated Eruptions

Mt. Tokachidake has experienced eruptions approximately once every 30 years in a repeating cycle since the 19th century. The traces of resulting pyroclastic flows, lava flows, and mudflows can be seen in the precious fields of the surrounding area. Let us introduce you to the works of people who coexist with these volcanoes.



### The Beautiful Hill Town and its Coexistence with the Volcanoes Born Out of the Surrounding Terrain Pyroclastic Flow and Farming: A Collaboration

The wavelike hills created by large scale pyroclastic flows were once a primeval forest. Roughly 130 years ago, the settlers of this area's hard work transformed the area into the 'hills' we see today.



### Developing a Northern Land Marked by the Traces of Volcanic Mudflow A Story of Volcanic Disaster and Recovery

In 1926, Mt. Tokachidake erupted, melting the snow around the mountain and causing a volcanic mudflow. The volcanic mudflow damaged vast stretches of farmland and resulted in the death of 144 people. We wish to convey to our visitors the hardship and endurance of the pioneers who lived through this time, as told in Ayako Miura's novel "Deiryu Chitai (the Mudflow Zone)".







## 1 Where did it come from? The Mysterious Blue Pond

Shirogane Blue Pond



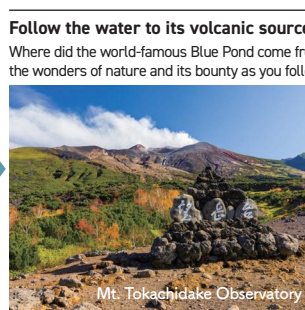
3.4km



Shirohige Waterfalls



5.0 km



Mt. Tokachidake Observatory



5.0 km



Shirogane Hot Spring

### Follow the water to its volcanic source

Where did the world-famous Blue Pond come from, and how did it form? On this course you can feel the wonders of nature and its bounty as you follow the water to its source.

### Our recommended course for car and rental car

🚗 Shirogane Blue Pond (Restroom, Parking Lot, 500 yen for standard size vehicle) ▶ Shirohige Waterfalls ▶ Mt. Tokachidake Observatory (Restroom, Free parking) ▶ Shirogane Hot Spring (One-day entry 300 yen~)

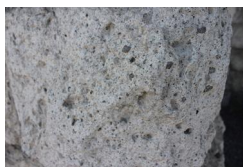
## Geocolumn

### Biei Soft Stone



The "hills" that spread across Biei are a result of pyroclastic flow deposits released by the catastrophic eruption nearly 2 million years ago. Biei soft stone contains brilliantly shining minerals like quartz. So Biei's soft stone is not only beautiful to look at, its softness makes it ideal for construction, and it is used all over Hokkaido.

Because new soft stone is no longer extracted, buildings like JR Biei Station and the roadside station "Oka no Kura" depend upon the recycling of material from other old buildings. Biei is working to make the most of what's left of this exquisite stone.



Hokusei-no-Oka Observatory



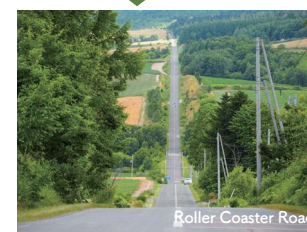
6.7km



Shin-ei-no-Oka Observatory



7.1km



Roller Coaster Road



8.9 km



Hinode Park

### These rolling hills tell a story

The hills that stretch from Biei to Kamifurano are completely unique. How did they form into this shape? What stories can these rural landscapes tell us? On this course you can uncover those answers, and learn how we protect its blessings.

### Our recommended course for car and rental car

🚗 Hokusei-no-Oka Observatory (Restroom, Free Parking) ▶ Shin-ei-no-Oka Observatory (Restroom, Free parking) ▶ Roller Coaster Road ▶ Hinode Park (Restroom, Free parking)

## Geocolumn

### The birthplace of Kamifurano's famous lavender



The eye-popping lavender, so ubiquitous in Hokkaido it could be called a symbol of the island, colors the landscape and is beloved by both tourists and natives alike. Cultivation of this flower began in 1948 in the Higashinaka district of Kamifurano, and was the first instance of the flower being raised as a crop in all of Japan. It turned out to be an ideal crop for the area, and at its peak in the 1950's, Kamifurano provided 80% of the country's lavender. Unfortunately, not long after the use of raw lavender as a material in the manufacture of fragrances came to an end. However, in the 1970's after being featured on calendars and in newspaper articles, the lavender fields became a popular tourist attraction and once again flourished.







**Biei History Museum "Misora"**  
A facility where you can learn about geo-stories  
The Beautiful Hill Town and its Coexistence with the Volcanoes Born Out of the Surrounding Terrain  
Pyroclastic Flow and Farming: A Collaboration

**Tokachidake Volcanic Gallery**  
A facility where you can learn about geo-stories  
The Roof of Hokkaido: A Tale of Mt. Tokachidake  
Living Together with Repeated Eruptions

**Kamifurano History Museum**  
A facility where you can learn about geo-stories  
Developing this Northern Land Marked by the Traces of Volcanic Mudflow  
A Volcanic hazard and recovery from the disaster

**Never enter fields or private property.**  
We ask that those who take photographs or videos in this area do not interfere with the production activities of the farmers.  
**Manners for using Daisetsuzan National Park**  
Don't throw garbage away.  
Don't pick plants or flowers.  
Don't feed wild animals.  
Don't catch animals.  
Don't smoke while walking.  
Bonfires must be lit in designated areas.  
Use portable toilets.  
Tokachidake Geopark Promotion Council is acting as a "Partner in Promoting Portable Toilets in Daisetsuzan National Park"

**SIGHT**  
GEOSITES  
ECOLOGICAL SITE  
CULTURAL SITE  
VIEWSPOTS  
FACILITIES  
Major sightseeing spots  
National highway  
Prefectural road  
Other roads  
Mountain trail  
JR Line

**TOKACHIDAKE GEOPARK**  
BIEI-KAMIFURANO AREA  
GEO PARKS JAPAN



9



## Geo tour

Geotours are conducted by geoguides certified by Tokachidake Geopark Promotion Council.  
We offer a variety of tour routes to enjoy throughout the year.



### Tales of Tokachidake 1

This route gives you chance to watch traces of volcanic eruption around Bogakudai. You need to walk a mountain trail for short time.  
The route is at least appropriate to wear sneakers.



### Beautiful hills coexistent with volcano 1

This route gives you chance to watch rural landscape coexistent with volcano around hills area in Biei town. You can enjoy driving and cycling in wavy and beautiful hills.



### Cultivating Deiryu Chitai

This route gives you chance to watch volcanic disaster and reconstruction.  
You can find settlers 100 years before now through novels "Mudflow Zone (Deiryu Chitai)" and "Deiryu Chitai 2" written by MIURA Ayako.

- 📍 Each tour departs from Biei, Kamifurano, or the suburbs of Shirogane Onsen and Tokachidake Onsen.  
We can also create routes according to customer requests.
- 🕒 In principle, each tour will be provided in Japanese. If you would like a tour in English, please contact us.
- 🕒 Each tour lasts approximately 2-3 hours.  
We can also offer a short tour, if you are not confident in your physical strength, such as the elderly.
- 💰 Please contact us about tour fee.

### Tales of Tokachidake 2

This route gives you chance to watch trace of volcanic eruption around Nukkakushi Crater of Mt.Tokachidake. The route is at least appropriate to wear sneakers.  
During the winter, you can enjoy the route with snowshoes.



### Beautiful hills coexistent with volcano 2

This route gives you chance to watch rural landscape coexistent with volcano around hills area in Kamifurano town. You can enjoy driving and cycling in wavy and beautiful hills.



### Knowing volcano by walking forest

This route gives you chance to watch plants and animals coexistent with volcano around forest at the foot of Mt.Tokachidake.



## Facilities

Tokachidake Geopark has three base facilities for each story, and you can have a different experience.



### Tokachidake Volcanic Gallery (Volga)

This facility disseminates various information regarding volcanic activities and disasters at Mt. Tokachidake. We are monitoring the occurrence of volcanic mudflow on Mt. Tokachidake 24 hours a day.



- 📍 Shirogane Biei-cho Kamikawa-gun Hokkaido  
Hokkaido Bus "Shirogane Onsen" stop 20minute walk (cross the bridge in the back from Shirahige Falls and take 286 steps)
- 🕒 May-October 8:30-17:00 Open all day  
November-April 10:00-16:00 Closed on Tuesdays  
Closed on New Year Holidays (28th Dec.-6th Jan.)
- 🆓 Admission free

- ♿ Barrier-free Information  
Slope available-Wheelchair accessible  
Elevator access in the facility  
Free parking (next to the building entrance)  
Accessible restroom available



### Biei History Museum "Misora"

Introduce the structure of the land and the history of Biei.  
There is an observatory where you can observe stars even during the day, so you can realize "Biei in the universe".



- 📍 4-1 Sakaemachi Biei-cho Kamikawa-gun Hokkaido  
J6minutes walk from JR Furano Line "Biei" station
- 🕒 10:00-19:00 (Admission until 18:30)  
Closed on Tuesday  
(If Tuesday is a holiday, closed on the next day)  
Closed on New Year Holidays (31st Dec.-5th Jan.)
- 🆓 Admission free  
Observatory  
200 yen for high school students and above  
(There are various discount)

- ♿ Barrier-free Information  
Slope available-Wheelchair accessible  
Elevator access in the facility  
Free parking (next to the building entrance)  
Accessible restroom available



### Kamifurano History Museum

Exhibit the history of Kamifurano, from its settlement to development, volcanic disaster caused by the Mt. Tokachidake eruption (mainly the 1926 Taisho mudflow), and its current agricultural history.



- 📍 1-3-30 Tomimachi Kamifurano-cho Sorachi-gun Hokkaido  
9minutes walk from JR Furano Line "Kamifurano" station
- 🕒 9:00-16:00  
Closed on Mon. and weekdays during winter (Nov.-Mar.)  
Closed on New Year Holidays (31st Dec.-5th Jan.)
- 🆓 Admission free

- ♿ Barrier-free Information  
The building entrance and access from the 1st to 2nd floor are only by stairs.  
Thank you for your understanding.

